

SMT Value Added Services

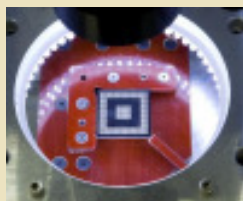
Device to Adapter Mounting and BGA Rework Services



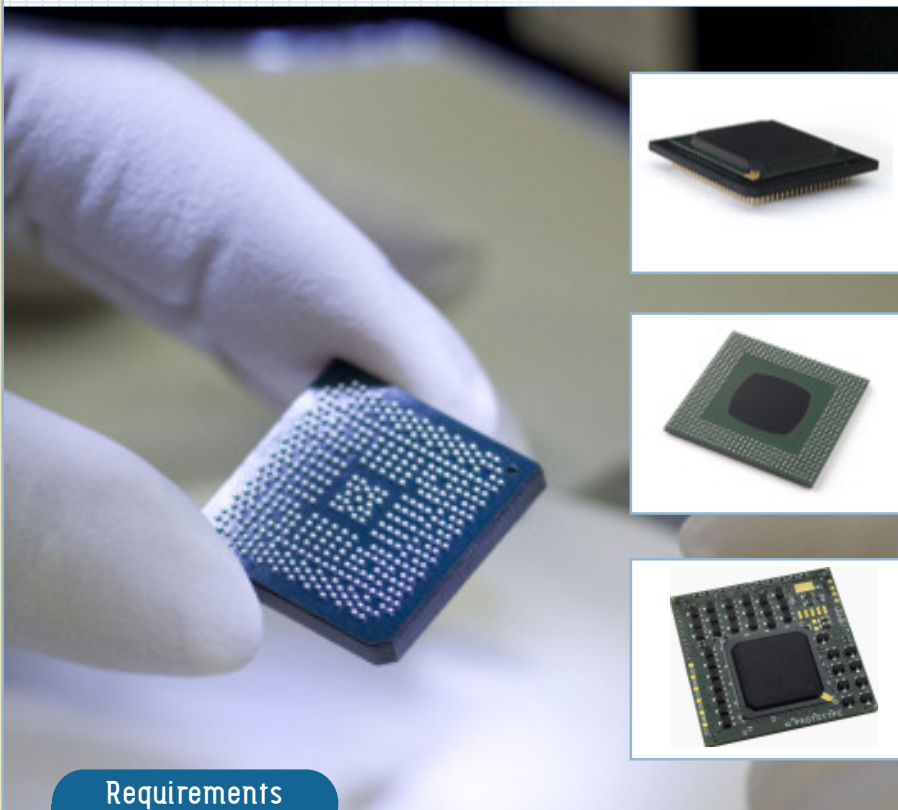
www.advanced.com

Advanced Interconnections offers value added surface mount device attach and rework services in our in-house SMT production facility.

We work with customer-supplied devices or will purchase your specified IC to provide a one-stop service including device procurement, adapter production, device attach, and optional tape and reel packaging – simplifying the process and ensuring quality control from start to finish.



From 0.50mm to 1.27mm pitch, our value added services will reduce your costs and streamline the process.



Equipment List

- ▶ Air-Vac™ DRS24 BGA Rework Station
- ▶ Speedline™ MPM Ultraprint 2000 Fully Automatic Stenciler
- ▶ Quad™ Meridian 1030P and 4C Precision Pick & Place Machines
- ▶ Genrad™ Stinger Electrical Tester
- ▶ BTU International™ VIP 98 Reflow Oven
- ▶ J.O.T. Panelmaster™ 18HS PCB Router
- ▶ Nicolet™ NXR-10HR X-Ray with Photo
- ▶ Custom BGA Vision Inspection System
- ▶ Cyberoptics™ Paste Height Measurement



Equipment manufacturers' company and brand names are trademarks of their respective owners.

Requirements

To ensure an accurate quotation, please provide the following in addition to quantity and delivery requirements:

- Device mechanical specs including solder ball composition.
- Bake-out for moisture control and thermal cycle specifications.
- Electrical test and/or product serialization requirements.
- Packaging requirements: product is reshipped in ESD trays with internal foam layers in ESD shielded vacuum-sealed bags. Optional tape and reel packaging or customer-supplied materials may also be requested.

Notes:

- Customer-supplied devices must be received in ESD protective (antistatic) packaging, vacuum-sealed for moisture control with outside containers marked accordingly.
- Advanced Interconnections assumes no responsibility or liability for the function of customer-supplied semiconductors either before or after the value added service is performed.
- Services are performed to IPC standards to a class III level.



5 Energy Way, West Warwick, Rhode Island 02893 USA
Tel: 800.424.9850 | 401.823.5200 | Fax: 401.823.8723
E-mail: info@advanced.com | Web: www.advanced.com